

Ruwac® USA Industrial Vacuums

WNS Series

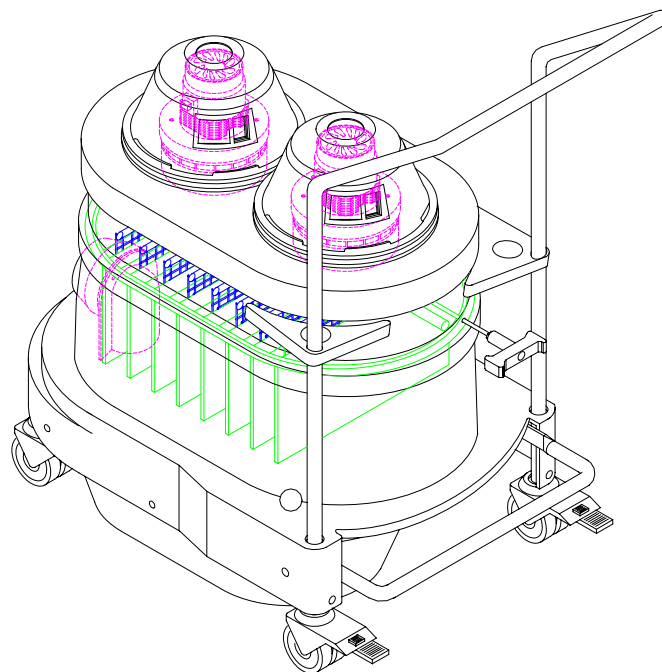
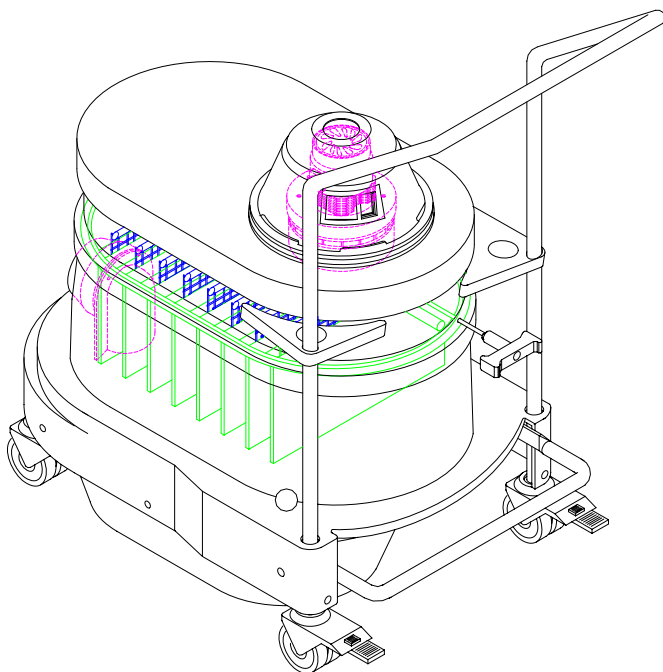
Parts Manual

Model No.

Serial No.

Filter No.

Start-Up Date



Contents

Warranty

Safety

Parts

Warranty

RUWAC warrants that new equipment which are complete units and are sold and/or manufactured by RUWAC, Inc. will be free from defects in material and workmanship for a period of 18 months from date of shipment or 12 months from date of start-up, whichever come first. RUWAC warrants that replacement parts sold hereunder will be free from defects in material or workmanship for a period of 120-days after the date of shipment. RUWAC machines that have been completely re-built at the factory will carry a 180-day warranty from date of shipment. All field repairs performed by authorized RUWAC service personnel are covered by a 120-day parts only warranty.

RUWAC, Inc. will not assume any responsibility under the terms of this limited warranty on equipment, which has not been paid in full. This warranty does not apply to any equipment that has been disassembled, repaired, or otherwise altered by any person without the written authorization of RUWAC'S service department, nor does it apply to any product that has been subjected to failure due to corrosive or abrasive attack, misused, damaged, or improperly installed, nor does it apply to motors, controls, and components not manufactured by RUWAC, Inc. Motors, controls, and other Sub vendor's components therefor are warranted only to the extent of the manufacture's warranty. All warranty work on such products must be authorized by RUWAC, Inc. and must be performed in an authorized shop as designated by the manufacturer. RUWAC sole liability and buyer's sole and exclusive remedy hereunder is the replacement or repair at RUWAC'S option of products not complying with this warranty. Such repair or replacement shall be F.O.B. RUWAC'S factory, and RUWAC reserves the right to invoice all expenses incurred when repairs are made in the field at the request of the customer, except as specifically set forth herein, RUWAC makes no warranty express or implied, with respect to the products and/or service supplied hereunder, this warranty is in lieu of and excludes all other warranties, including without limitation, any warranty of merchantability, fitness for a particular purpose, or conformance to purchaser's specifications.

Safety

CAUTION: Standard Ruwac WNS machines are not to be used for the removal of liquids or any volatile, viscous, flammable or explosive media. If you are unsure about your application requirements consult your Ruwac representative.

CAUTION: Standard Ruwac WNS machines are designed for intermittent use, i.e. not more than 2 hours continuously. If you are unsure about your application requirements consult your Ruwac representative.

CAUTION: A dust mask should be worn when working with used filters.

CAUTION: Disconnect the machine from the power source before and during inspection and/or maintenance.

CAUTION: Machines equipped with a reverse pulse module must always be supplied adequately when the machine is on. The module is controlled by an electrical sequential timer (requires a 110 volt power supply) or differential pressure switch. The module itself requires a source of compressed air of 90 PSI at 2-4 CFM (depending on module). This device prevents the accumulation of material on the filter and therefore prevents the machine from being held under excessive stresses due to material blockage.

CAUTION: Machines equipped with a motorized shaker must be supplied with a three phase, 230-460 volt (depending on motor) power supply when ever the machine is on. The motorized shaker is controlled by an electrical sequential timer (requires a 110 volt power supply), a differential pressure switch or a manual switch. Manual switch models should be actuated before and after every use while the vacuum is off. This device prevents the accumulation of material on the filter and therefore prevents the machine from being held under excessive stresses due to material blockage.

REVISIONS		
REV.	DESCRIPTION	DATE

ITEM NO.	PART NUMBER	DESCRIPTION	QTY.
1	27001	Motor Head, Aluminum	1
2	8021	Protection Screen, Motor Head	1
3	27004	Motor Head Gasket, WNS	1
4	2509811	Neoprene Sponge Gasket, .375 Thick, 5in ODx 2.25in ID	1
5	27002	Motor, 2 Stage, PD, 1000W, 120V	1
6	31715	Terminal, 90deg, 16-14 Gauge, Blue	2
7	27007	Separator Plate, WNS Motor Head	1
8	25064	#8x 5/8 Pan Head Screw	2
9	27014	Motor Housing, Single Motor	1
10	27015	Housing Cover, Single Motor	1
11	8004	Support Ring for Single Motor	1
12	25211	Male IEC Plug	1
13	27017	Rocker Switch, 1000/1200watt	1
14	27011	#6x 1/2 Sharp Point Screw	2
15	27012	#8x 1/2 Pan Head Screw	3
16	27003	#8-2 Phillips Pan Head, Zinc	6
17	34905A	Wire Assembly, Plug to Switch, WNS	2
18	32989	#10-16 x 5/8 Hex Washer Tek Screw	1
19	Ground Connector	Ground Connector, Motor to IEC Plug	1

UNLESS OTHERWISE SPECIFIED:
DIMENSIONS ARE IN INCHES
TOLERANCES:
FRACTIONAL: ± 1/16"
ANGULAR: MACH ± 30°
HOLE POSITION: ± .015"
THREE PLACE DECIMAL ± .030

DRAWN

CHECKED

ENG APPR.

MFG APPR.

G.A.

DATE

NAME

3/27/09

D.J.S.

54 Winter St.
Holyoke, Ma. 01040

TITL:

110V MOTOR HEAD ASM
27001A

SIZE

DWG. NO.

REV

B

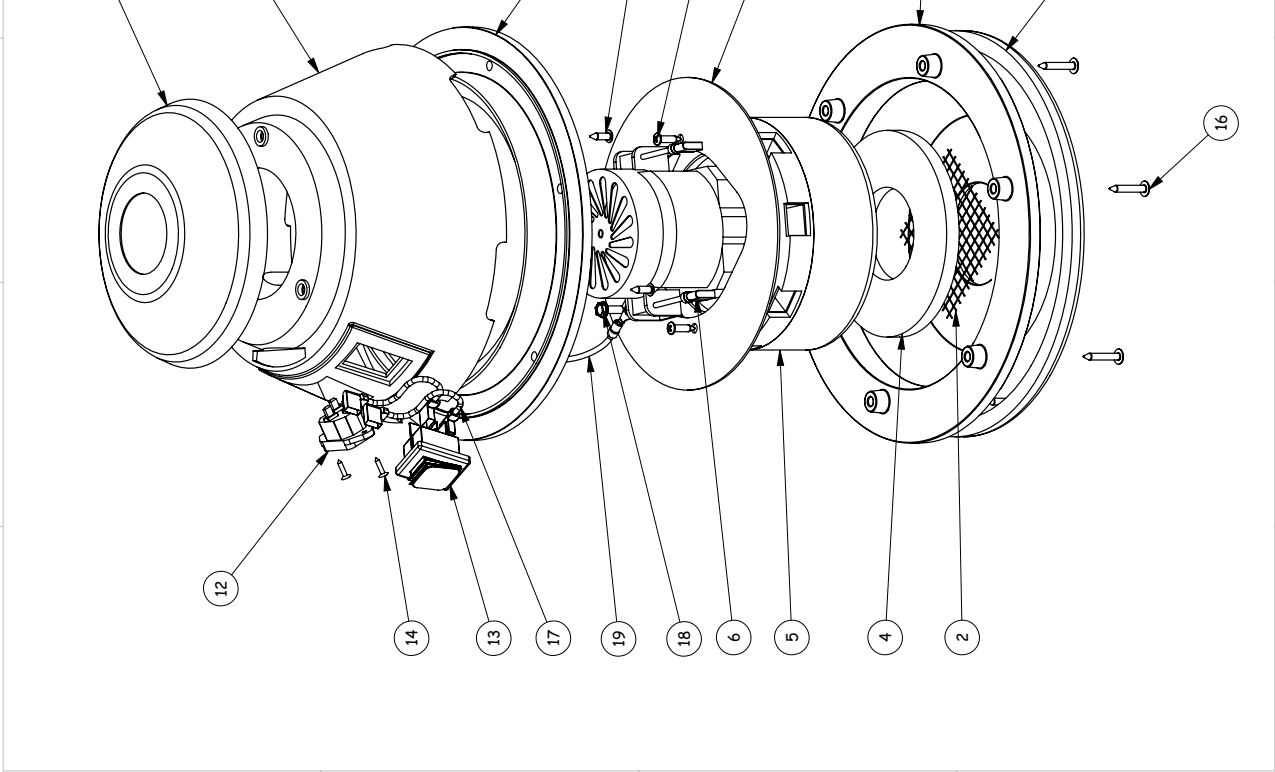
000 E 0221 US

SCALE: 1:3

WEIGHT:

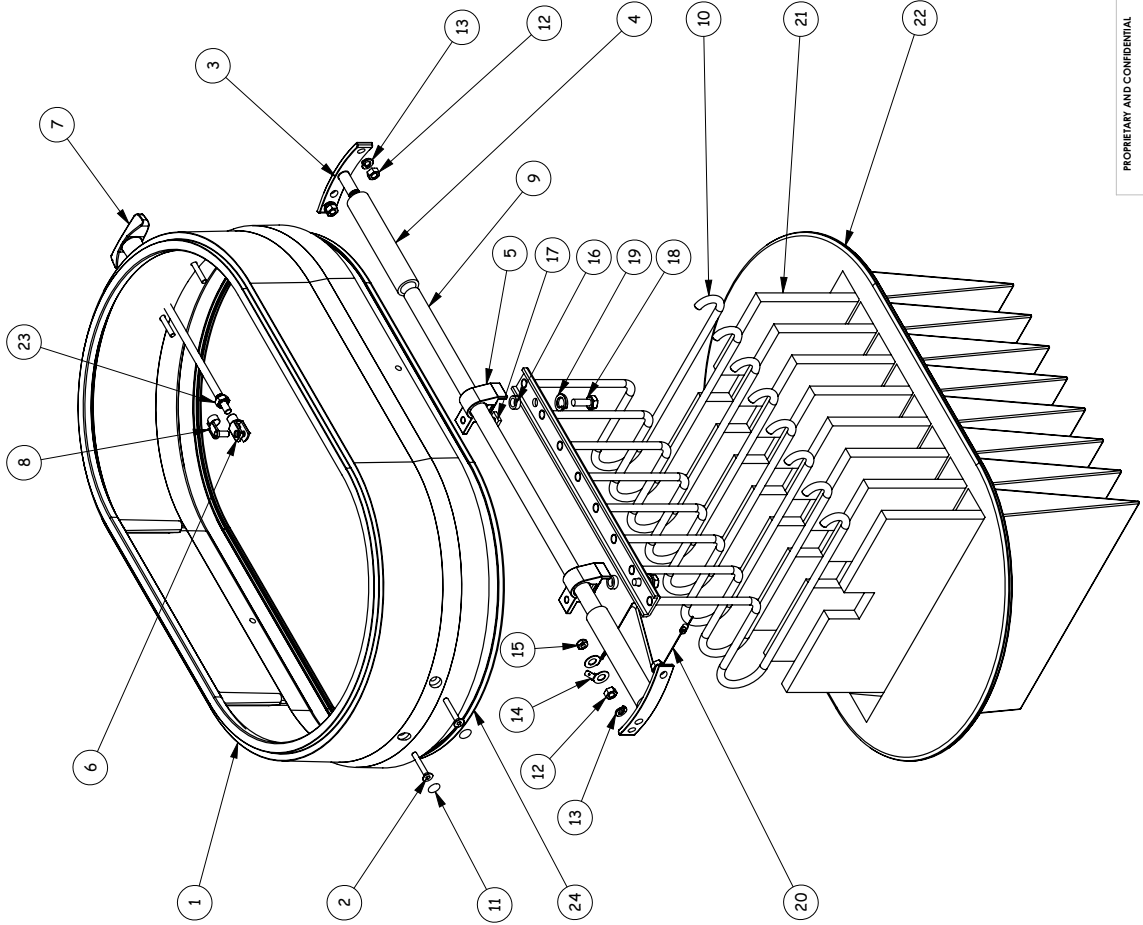
SHEET 1 OF 1

BREAK SHARP EDGES		
MATERIAL	---	---
FINISH	---	---
NEXT ASSY	USED ON	APPLICATION



PROPRIETARY AND CONFIDENTIAL
THE INFORMATION CONTAINED IN THIS
DRAWING IS THE SOLE PROPERTY OF
RUIWAC. ANY REPRODUCTION IN PART
OR AS A WHOLE WITHOUT THE WRITTEN
PERMISSION OF RUIWAC IS PROHIBITED.

REV. DESCRIPTION			DATE	NAME
H	E.C.O. # 481		6/28/07	D.J.S.
i	E.C.O. # 595		10/7/08	D.J.S.



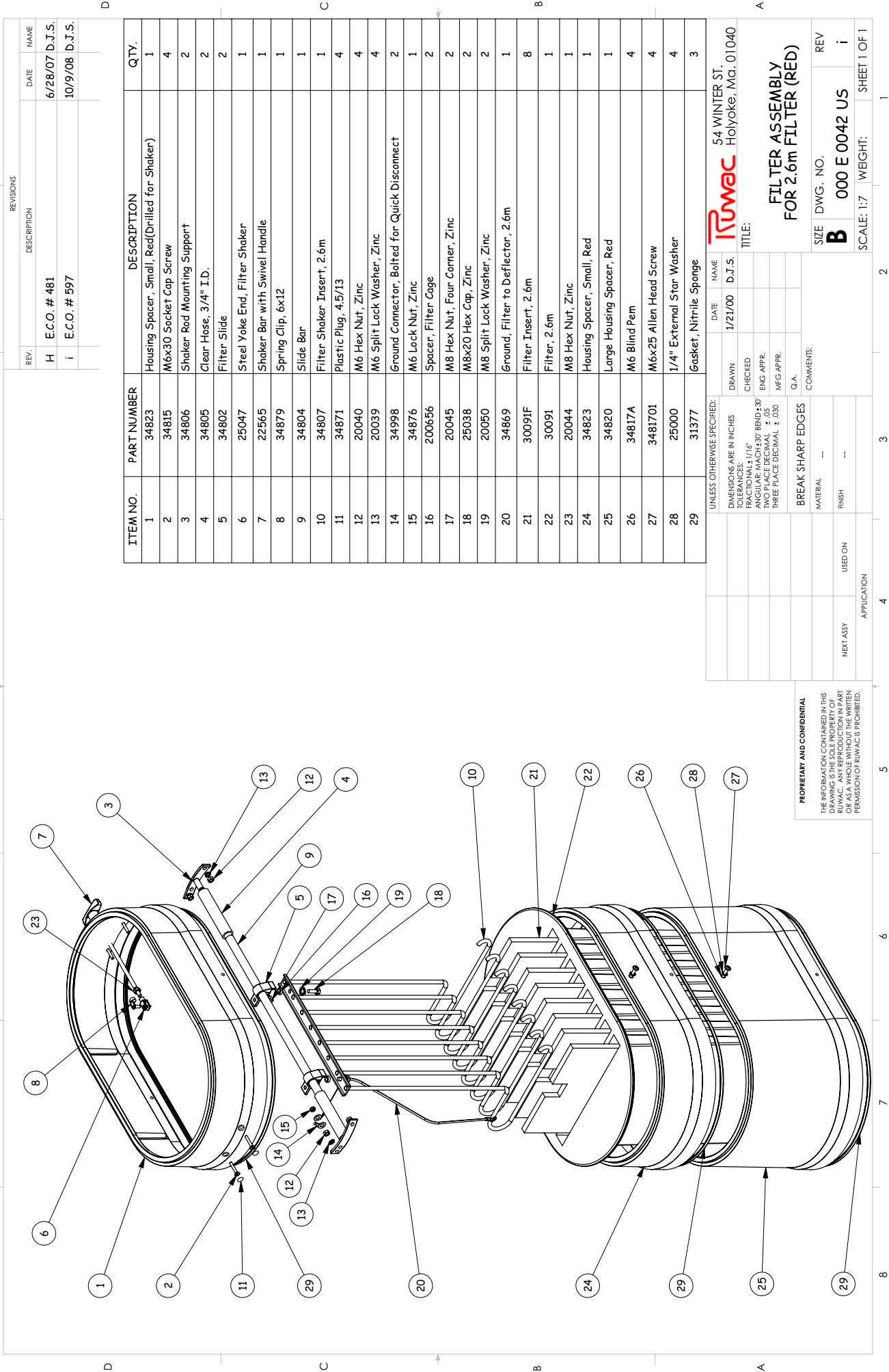
ITEM NO.	PART NUMBER	DESCRIPTION	QTY.
1	34823	Housing Spacer, Small, Red(Drilled for Shaker)	1
2	34815	M6x30 Socket Cap Screw	4
3	34806	Shaker Rod Mounting Support	2
4	34805	Clear Hose, 3/4" I.D.	2
5	34802	Filter Slide	2
6	25047	Steel Yoke End, Filter Shaker	1
7	22565	Shaker Bar with Swivel Handle	1
8	34879	Spring Clip, 6x12	1
9	34804	Slide Bar	1
10	25056	Filter Cage, 1.2m	1
11	34871	Plastic Plug, 4.5/13	4
12	20040	M6 Hex Nut, Zinc	4
13	20039	M6 Split Lock Washer, Zinc	4
14	34998	Ground Connector, Bolted for Quick Disconnect	2
15	34876	M6 Lock Nut, Zinc	1
16	200656	Spacer, Filter Cage	2
17	20045	M8 Hex Nut, Four Corner, Zinc	2
18	25038	M8x20 Hex Cap, Zinc	2
19	20050	M8 Split Lock Washer, Zinc	2
20	34868	Ground, Filter to Deflector, 1.2m	1
21	20091F	Filter Insert, 1.2m	8
22	20091	Filter, 1.2m, 13 sq/ft	1
23	20044	M8 Hex Nut, Zinc	1
24	31377	Gasket, Nitrile Sponge	1

UNLESS OTHERWISE SPECIFIED:		DATE	NAME	54 WINTER ST. Holyoke, Ma. 01040
DIMENSIONS ARE IN INCHES		8/2/01	D.J.S.	
TOLERANCES:		DRAWN	CHECKED	
FRACTIONAL: 1/16"				
ANGULAR: MATCH 30° BEING 30°				
HOLE POSITION: ± .005				
THREE PLACE DECIMAL: ± .030				
		ENG APPR.	MFG APPR.	
		Q.A.		
BREAK SHARP EDGES		COMMENTS:		
MATERIAL		C.R.S.		
FINISH		--		
NEXT ASSY		USED ON		
APPLICATION				

PROPRIETARY AND CONFIDENTIAL
THE INFORMATION CONTAINED IN THIS
DRAWING IS THE SOLE PROPERTY OF
RUIWAC. ANY REPRODUCTION IN PART
OR AS A WHOLE WITHOUT THE WRITTEN
PERMISSION OF RUIWAC IS PROHIBITED.

FILTER ASSEMBLY FOR 1.2m FILTER (RED)

SIZE	DWG. NO.	REV
B	000 E 0041 US	i
SCALE: 1:5	WEIGHT:	SHEET 1 OF 1



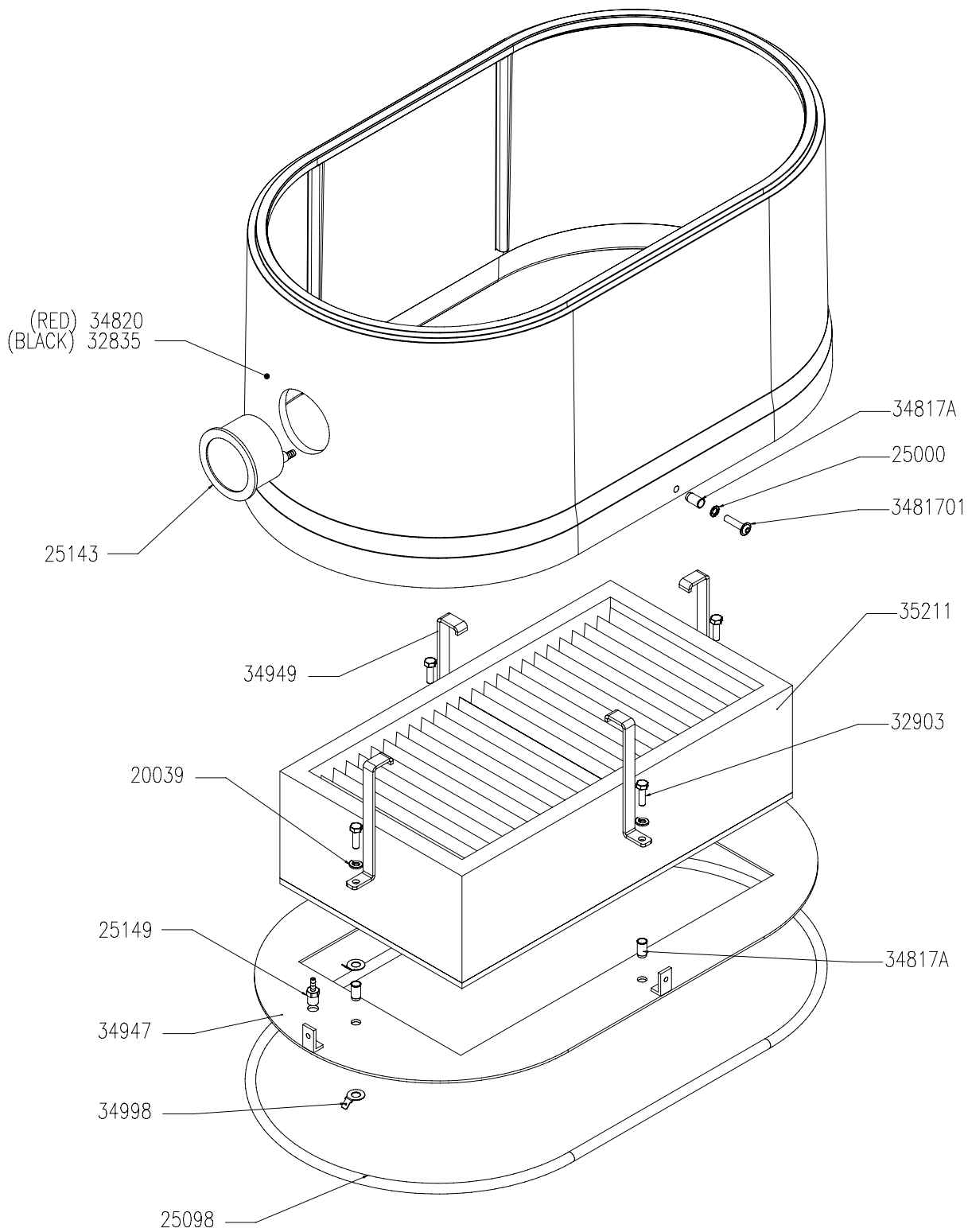
REVISIONS			
REV.	DESCRIPTION	DATE	NAME
H	E.C.O. # 481	6/28/07	D.J.S.
i	E.C.O. # 597	10/9/08	D.J.S.

ITEM NO.	PART NUMBER	DESCRIPTION	QTY.
1	34823	Housing Spacer, Small, Red(Drilled for Shaker)	1
2	34815	M6x30 Socket Cap Screw	4
3	34806	Shaker Rod Mounting Support	2
4	34805	Clear Hose, 3/4" I.D.	2
5	34802	Filter Slide	2
6	25047	Steel Yoke End, Filter Shaker	1
7	22565	Shaker Bar with Swivel Handle	1
8	34879	Spring Clip, 6x12	1
9	34804	Slide Bar	1
10	34807	Filter Shaker Insert, 2.6m	1
11	34871	Plastic Plug, 4.5/13	4
12	20040	M6 Hex Nut, Zinc	4
13	20039	M6 Split Lock Washer, Zinc	4
14	34998	Ground Connector, Bolted for Quick Disconnect	2
15	34876	M6 Lock Nut, Zinc	1
16	200656	Spacer, Filter Cage	2
17	20045	M8 Hex Nut, Four Corner, Zinc	2
18	25038	M8x20 Hex Cap, Zinc	2
19	20050	M8 Split Lock Washer, Zinc	2
20	34869	Ground, Filter to Deflector, 2.6m	1
21	30091F	Filter Insert, 2.6m	8
22	30091	Filter, 2.6m	1
23	20044	M8 Hex Nut, Zinc	1
24	34823	Housing Spacer, Small, Red	1
25	34820	Large Housing Spacer, Red	1
26	34817A	M6 Blind Pem	4
27	3481701	M6x25 Allen Head Screw	4
28	25000	1/4" External Star Washer	4
29	31377	Gasket, Nitrile Sponge	3

UNLESS OTHERWISE SPECIFIED:		DATE	NAME
DIMENSIONS ARE IN INCHES		1/21/00	D.J.S.
TOLERANCES:		DRAWN	CHECKED
FRACTIONAL: ± 1/16"			
ANGULAR: MATCH 30° BEING 30°			
HOLE POSITION: ± .010			
THREE PLACE DECIMAL: ± .030			
BREAK SHARP EDGES			
MATERIAL			
FINISH			
NEXT ASSY			
USED ON			
APPLICATION			

54 WINTER ST. Holyoke, Ma. 01040		TITLE:	
DRAWING NO.		REV	
B		i	
000 E 0042 US		SCALE: 1:7	
WEIGHT:		SHEET 1 OF 1	

PROPRIETARY AND CONFIDENTIAL
THE INFORMATION CONTAINED IN THIS
DRAWING IS THE SOLE PROPERTY OF
RUIWAC. ANY REPRODUCTION IN PART
OR AS A WHOLE WITHOUT THE WRITTEN
PERMISSION OF RUIWAC IS PROHIBITED.



NOTE:

- 1.) BOTTOM GROUND CONNECTOR NOT INSTALLED WHEN CARBON IMPREGNATED (BLACK) HOUSINGS ARE USED.



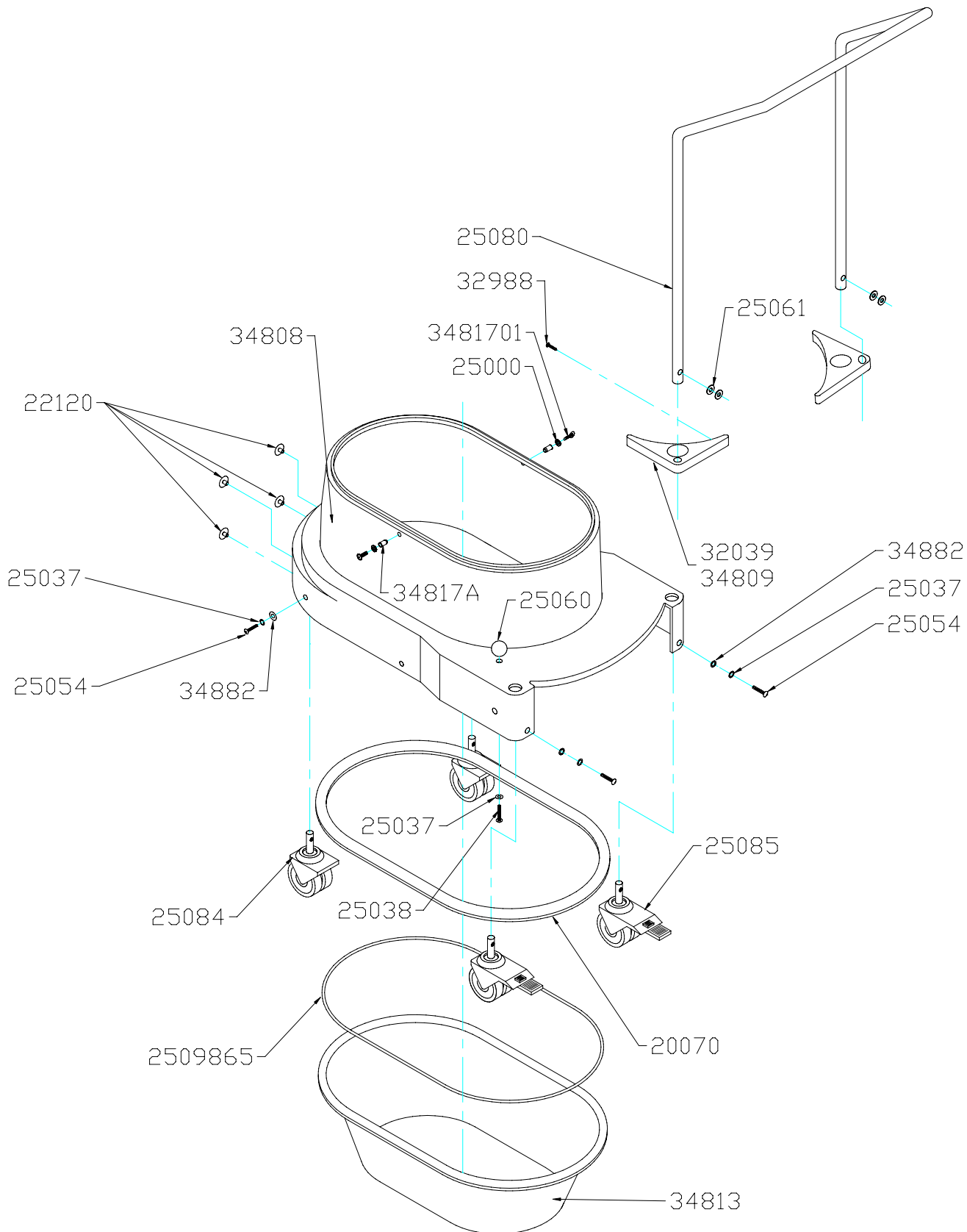
54 Winter Street
Holyoke, MA 01040, USA

HEPA FILTER ASSEMBLY

REV B REV DATE: 12/26/06 D.W.N. D.J.S. DATE: 7-23-03

HEPA FILTER ASSEMBLY

PART NUMBER	DESCRIPTION	QTY
34817A	M6 BLIND PEM	6
25000	1/4" STAR WASHER,EXTERNAL	2
3481701	M6X25 ALLEN HEAD SCREW	2
35211	HEPA FILTER 40 SQ FOOT,WS,DS1	1
32903	M6X1.0 X 20 HEX CAP SCREW,ZINC	4
34947	HEPA ADAPTER PLATE,DS1	1
20039	M6 SPLIT LOCK WASHER	4
34949	HEPA HOLD DOWN BRACKET,WS	4
32835	HOUSING SPACER,LARGE,BLACK	1
34820	HOUSING SPACER,LARGE,RED	1
25143	MINIHELIC,WITH MOUNTING BRACKET	1
25149	HOSE BARB,1/8 X 1/8,STRAIGHT, BRASS	1
34998	GROUND CONNECTION,FOR BOLT	2



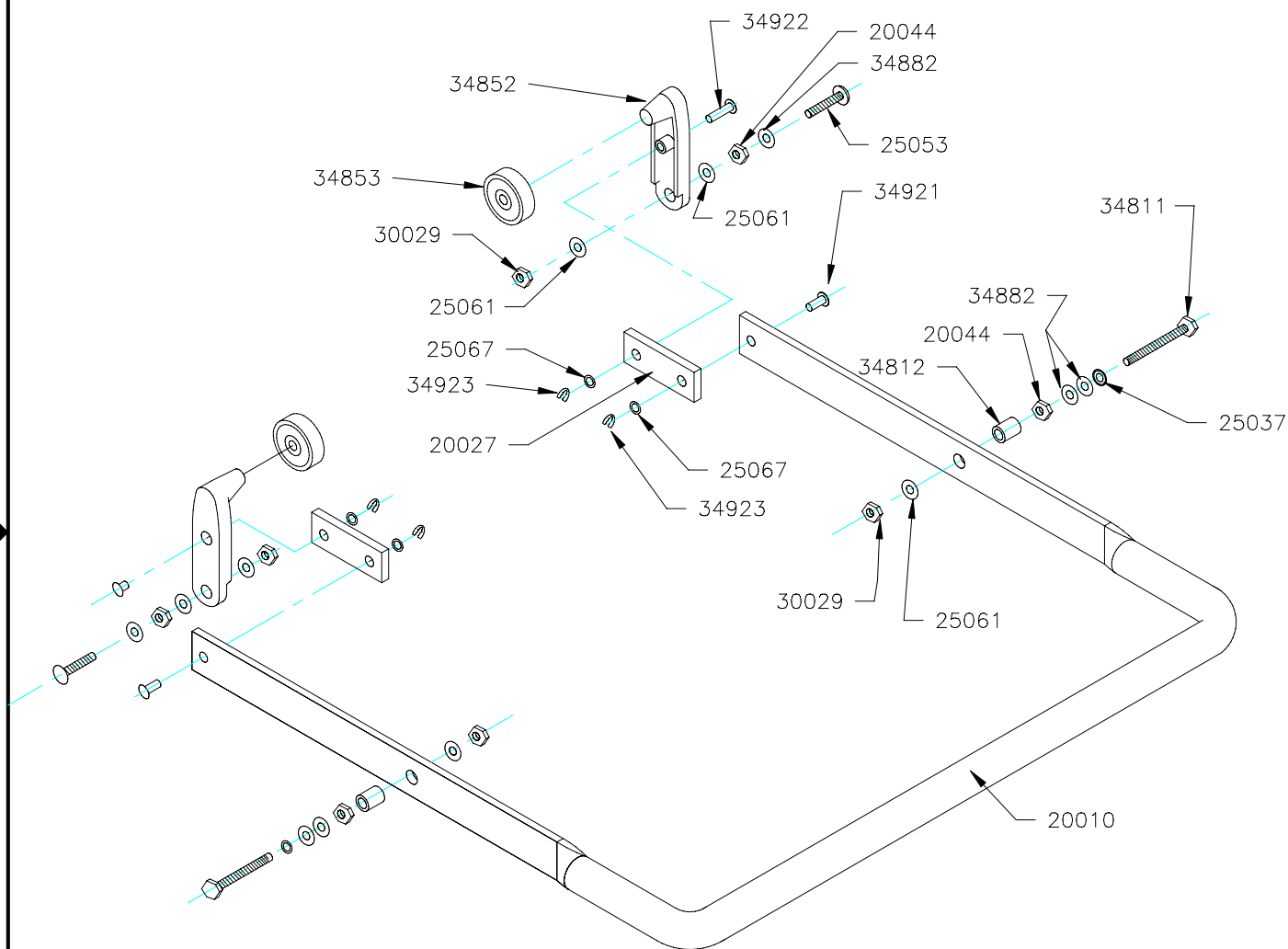
54 Winter Street
Holyoke, MA 01040, USA

WNS SERIES BASE

REV B REV DATE: 9/17/08 D.W.N. D.J.S. DATE: 6/17/03

WNS BASE ASSEMBLY

PART NUMBER	DESCRIPTION	QTY
25080	PUSH HANDLE	1
32988	#8 X 1 PHIL TRUSS HEAD,ZINC	4
3481701	M6X25 ALLEN HEAD SCREW	2
25000	1/4" STAR WASHER	2
32039	HANDLE SUPPORT,PLASTIC	2
34809	HANDLE SUPPORT,ALUMINUM	2
34882	M8 FLAT WASHER	4
25037	M8 WASHER (HEPA MACHINES HAVE A QTY. OF 5)	6
25054	M8 X 25 HEX BOLT	4
25085	DUAL CASTERS,FIXED,75MM,W/STUD	2
20070	GASKET,DUST PAN/LOWER HOUSING, 20X15MM	1
34813	DUST PAN,35LTR,RED	1
25038	M8 HEX CAP-1.25X20 ZINC (HEPA MACHINES HAVE A QTY. OF 1)	2
25060	KNOB,BLACK,8MM (HEPA MACHINES HAVE A QTY. OF 1)	2
34817A	M6 BLIND PEM	2
25084	DOUBLE CASTERS,SWIVEL,75MM	2
22120	PLUG,8MM,BLACK	4
34808	LOWER HOUSING,RED	1
2509865	DUST PAN REPLACEMENT GASKET	1
25061	M8 FLAT WASHER,ZINC	4



54 Winter Street
Holyoke, MA 01040, USA

DUST PAN LEVER ASSEMBLY

REV:

REV DATE:

D.W.N.

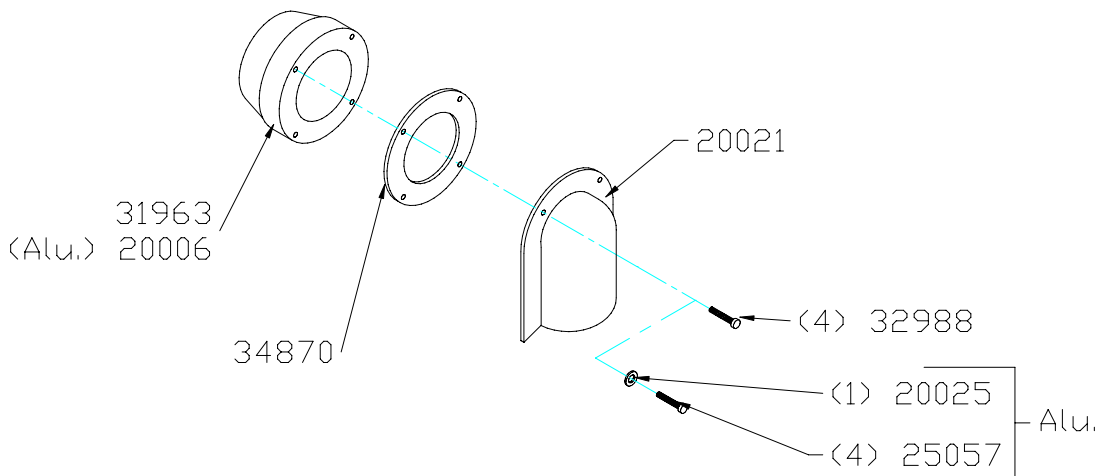
D.J.S.

DATE: 6/11/03

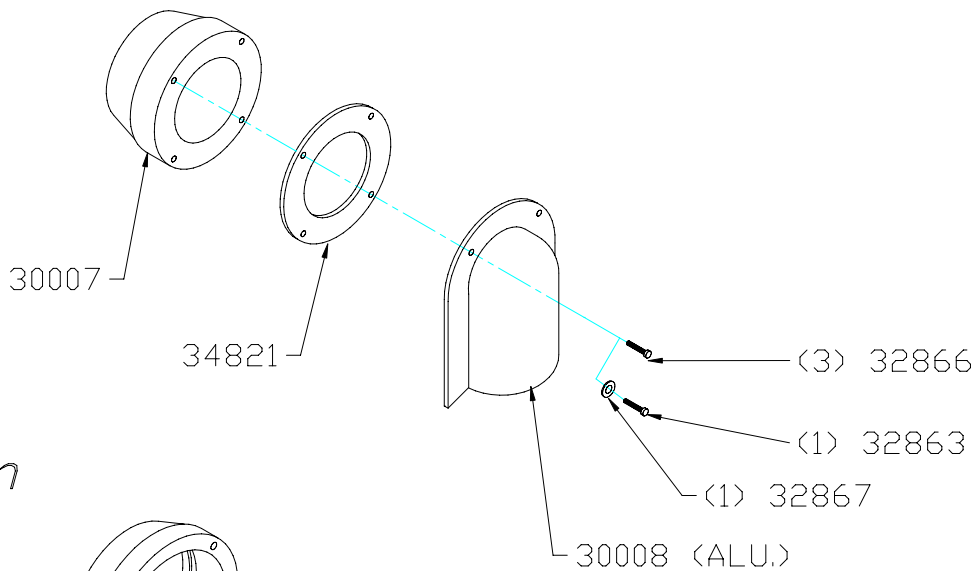
DUST PAN LEVER ASSEMBLY

PART NUMBER	DESCRIPTION	QTY
20010	FOOT LEVER	1
25061	M8 FLAT WASHER,ZINC	6
30029	M8 LOCK NUT	4
34923	C SPRING CLIP	4
25067	M6 FLAT WASHER	4
20027	FLAT STEEL PIVOT	2
34853	DUST PAN LEVER BEARING	2
34852	DUST PAN TENSION LEVER	2
34922	PIN,D=6X 19MM	2
20044	M8 HEX NUT -8	4
34882	M8 FLAT WASHER	6
25053	M8 X 35 CARRIAGE SCREW	2
34921	PIN D6X15	2
34812	SPACER FOR FOOT LEVER	2
25037	M8 WASHER,EXTERNAL	2
34811	M8 HEX BOLT,X 55-8.8	2

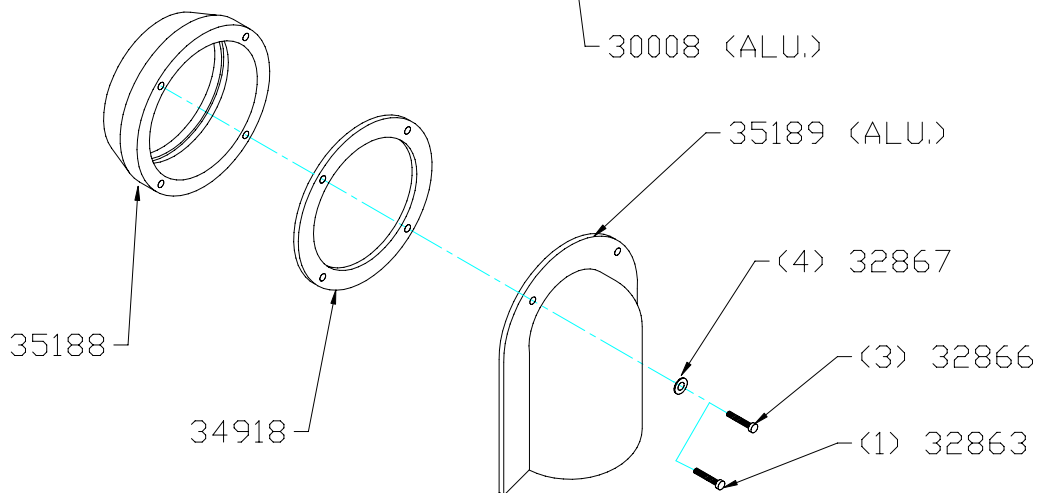
50mm



70mm



100mm



54 Winter Street
Holyoke, MA 01040, USA

50mm, 70mm, & 100mm INLET ASSEMBLY

REV

D.W.N.

D.J.S.

DATE:

6-11-03

50mm INLET

PART NUMBER	DESCRIPTION	QTY
31963	INLET,50MM, GFK BLACK PLASTIC	1
20006	INLET,50MM,ALUMINUM	1
34870	GASKET 50MM INLET	1
20021	INLET DEFLECTOR,50MM,METAL	1
32988	#8 X 1 PHIL TRUSS HEAD,ZINC	4
20025	WASHER,STAR LOCKING,M4	1
25057	M4X20 SOCKET SCREW CAP	4

70mm INLET

30007	INLET,70MM,ALUMINUM	1
34821	GASKET,70MM INLET	1
30008	DEFLECTOR,70MM,ALUMINUM	1
32866	M5-.8X30 SOCKET CAP,ALLEN HEAD	3
32863	M5-.8X20 SOCKET CAP SCREW	1
32867	M5 EXT TOOTH LOCK WASHER ZINC	1

100mm INLET

35188	INLET,100MM,ALUMINUM	1
34918	GASKET,100MM INLET	1
35189	DEFLECTOR,100MM,ALUMINUM	1
32867	M5 EXT TOOTH LOCK WASHER ZINC	4
32866	M5-.8X30 SOCKET CAP,ALLEN HEAD	3
32863	M5-.8X20 SOCKET CAP SCREW	1