

The Original & Patented Self-Cleaning Vacuum

HPLM 3690



THE WORLD'S FIRST

HPLM

HIGH PERFORMANCE • LOW MASS

VACUUM SYSTEM

pulsebar®
Automatic Pulse-Clean Technology™

HPLM 3690



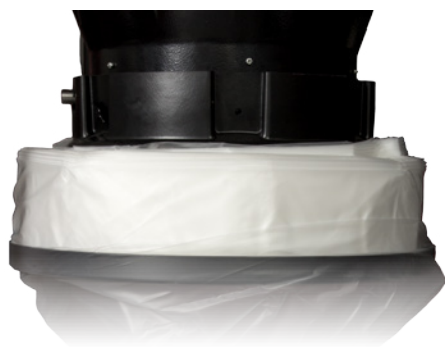
What is HPLM?

Put simply, it's the highest power to weight ratio you will find in a vacuum today. With 690CFM and 110" of lift, this vacuum weighs in at just 208lbs. That is 70% lighter than other vacuums with similar performance. The 3690 will supply all the power you need in a portable package that saves time and trouble. Plus it uses our innovative Revolution 3690 Bagger cart allowing it to move around the jobsite with ease. To round it all out the 3690 features our patented Pulse-Bac technology that keeps filters clean and suction consistent.

CFM	690
LIFT	110"
WEIGHT	208 lbs.
COLLECTION	LONGOPAC®
INLET	3" LOCKING
VOLTAGE	220V
AMPERAGE	17

Features & Benefits

- Pulse-Bac Self-Cleaning Technology
- HPLM Design
- LongoPac - Endless Bag
- Wireless Remote Control
- Power Coated Steel Construction
- Non-Marking 5 Caster Dolly
- Cyclonic Debris Management
- Easy Empty Standing Dump Valve
- Revolution 360 Frame
- Locking Inlet



Longopac Endless Bagging System

Popular with contractors in many fields, the Longopac endless bagging system provides a quick dust free bagging solution and has never worked better now that it is paired with Pulse-Bac's patented Easy Empty Valve system.

Remote Start

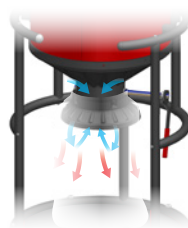


Everybody has done it. You get over to your tool, start working and realize you forgot to start the dust collector as you watch a cloud of dust shoot into the air. With the 3690's remote start those days are gone. The handy fob can turn the unit on & off from distances of up to 180 feet.

Standing Debris Dump w/ Auto-Close

The 3690 features a redesign of the Easy Empty valve system found on our 1000 Series bagger. It has the same patented design that allows the vacuum to continually operate while the debris is being released from the collection tank into the bag, never again will you need to turn the vacuum off to discard debris. We didn't stop there though, we went even further with these two additional features. The new version can be easily emptied from a standing position and when released, the Easy Empty valve automatically returns to the closed position.

The patented Easy Empty system allows the vacuum to keep running when debris is dumped.



Why is Pulse-Bac® Better?

Everyone has dealt with the trouble that a clogged vacuum filter creates, it takes up valuable time and creates a mess. Pulse-Bac solves this problem with our **patented automatic pulse-clean technology™** that automatically cleans the filter while you work. Others may claim to have “automatic” or “pulse” filter cleaning, but look closely and you’ll see **that they fall short of the original**, requiring extra equipment like air compressors or manual gadgets that require work to stop for filter cleaning. These don’t truly solve the problem and make for more work. Only vacuums with the Pulse-Bac® name use our unique technology to **automatically clean the filter while you work**.

The Mechanics of Pulse-Bac.

1. Dirty air containing dust and debris enters the tank through the inlet, just like any vacuum.
2. The air is cleaned as it’s drawn through the filter by the vacuum motor, leaving dust and debris behind.
3. The technology opens the valve electronically, switching the filter from the vacuum motor to clean ambient air.
4. This valve is only open for a fraction of a second. This sudden change causes the airflow to dramatically reverse direction, pulling ambient air back through the filter to remove dust and debris from it.
5. The multi-filter system insures that suction is consistent as only one filter at a time receives a cleaning pulse. The momentary pulse continually cycles from filter to filter, to insure all the filters remain clean.

